



**BrickLine**  
Ventilated  
rainscreen facade  
built for eternity.





OTHERS CALL IT STYLISHLY MODERN

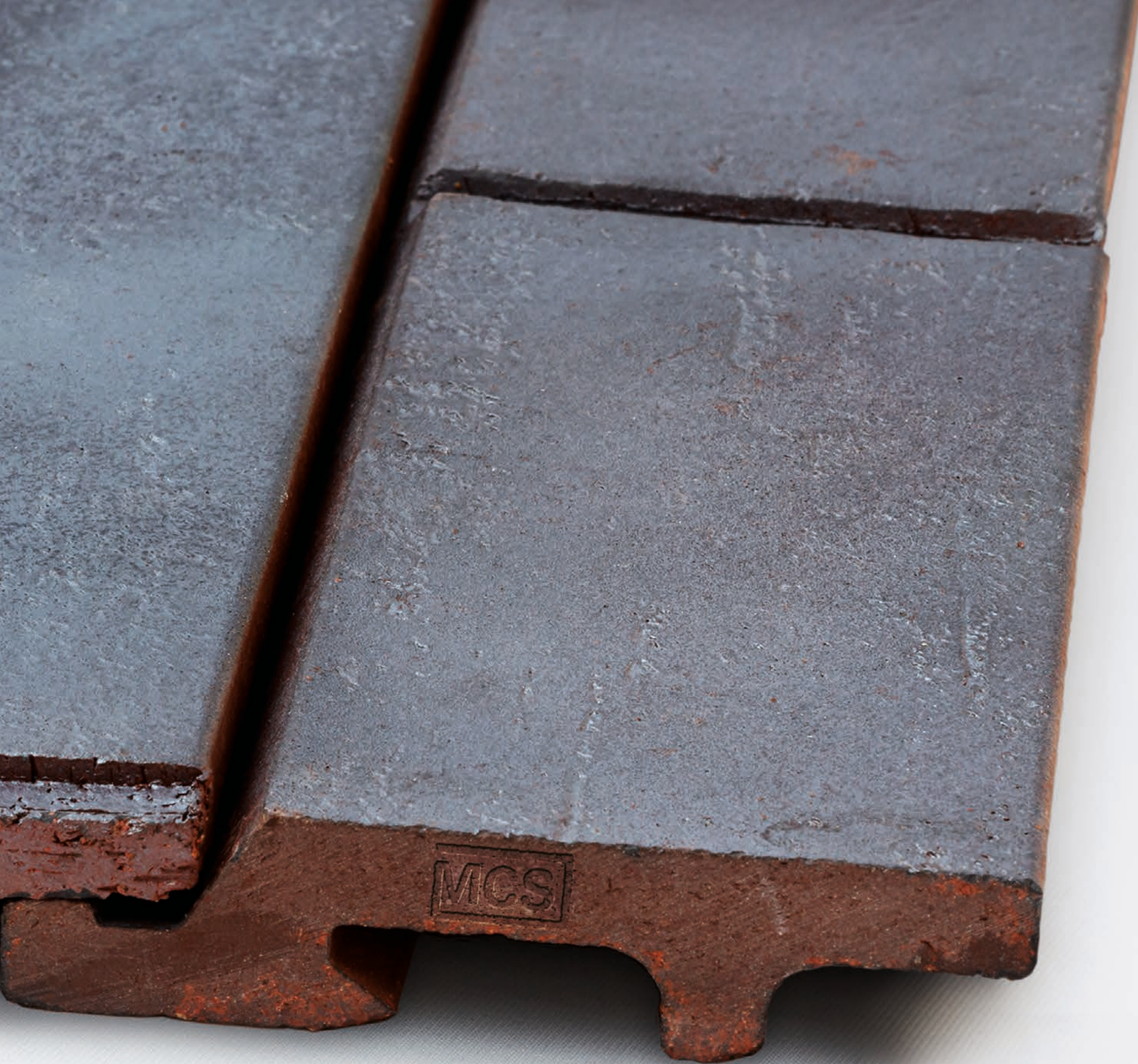
## We call it the ventilated brick slip rainscreen facade.

WHY ARE TONALITY FACADES VENTILATED?

The ventilation of facades is of huge importance. If air moisture is allowed to condense between the insulation and the facade, it will result in mould, material wear and frost damage. The medium-term effectiveness of the structure as a whole is jeopardised. But this can be changed. A ventilated rainscreen construction method uses the so-called stack effect to ensure that the facade stays dry permanently at all times. From a bioconstructive perspective, this is highly recommended – and it permanently protects all components from damp.







NOW WE GET SUPERFICIAL

## Strong colours, strong clay.

Our brick slips are available throughout the world in a wide variety of shapes and colours and with a broad range of surfaces. What they all have in common is that the highest quality clay from the Westerwald is used in their production. And thanks to the modern sintering process, incredibly high strength is achieved. Tiles from TONALITY are a high-quality product: Durability, robustness and a surface that is extremely easy to care for guarantee the permanent reliability of the facade systems.

**PRODUCT** | TONALITY® BrickLine  
**COLOR** | Platinum black  
**SURFACE** | smooth



# We don't do complicated.

## BENEFITS AT A GLANCE

- 6
- 1

THE SUSTAINABLE FACADE IN A VARIETY OF COLOURS

Resource-efficient production, reusability and the capacity for material-based recycling: this is sustainability in facade construction – with a view to the future.
- 2

UPGRADING INSTEAD OF DEMOLISHING

TONALITY facades are ideal for use in refurbishments. Old exterior insulation finishing systems remain on the wall and are newly clad.
- 3

STABILITY IN ALL SITUATIONS

The brick slips are mechanically attached and withstand extremely high stresses.
- 4

ENTIRELY DRY CONSTRUCTION IN ANY WEATHER

The ventilated brick slip rainscreen facade is erected using a total dry construction technique. This means that installation can take place without any problems all year round – even in frosty temperatures.
- 5

FACADE CONSTRUCTION USING A CONNECTOR SYSTEM

Thanks to the simple installation principle, our systems can be installed directly after a brief training – accurately and without any special tools.
- 6

THE HIGHEST LEVEL OF FIRE SAFETY

Non-flammable. Rated within the highest fire protection class A1 according to DIN 4102 and EN 13501-1.
- 7

COMPLETELY MAINTENANCE-FREE

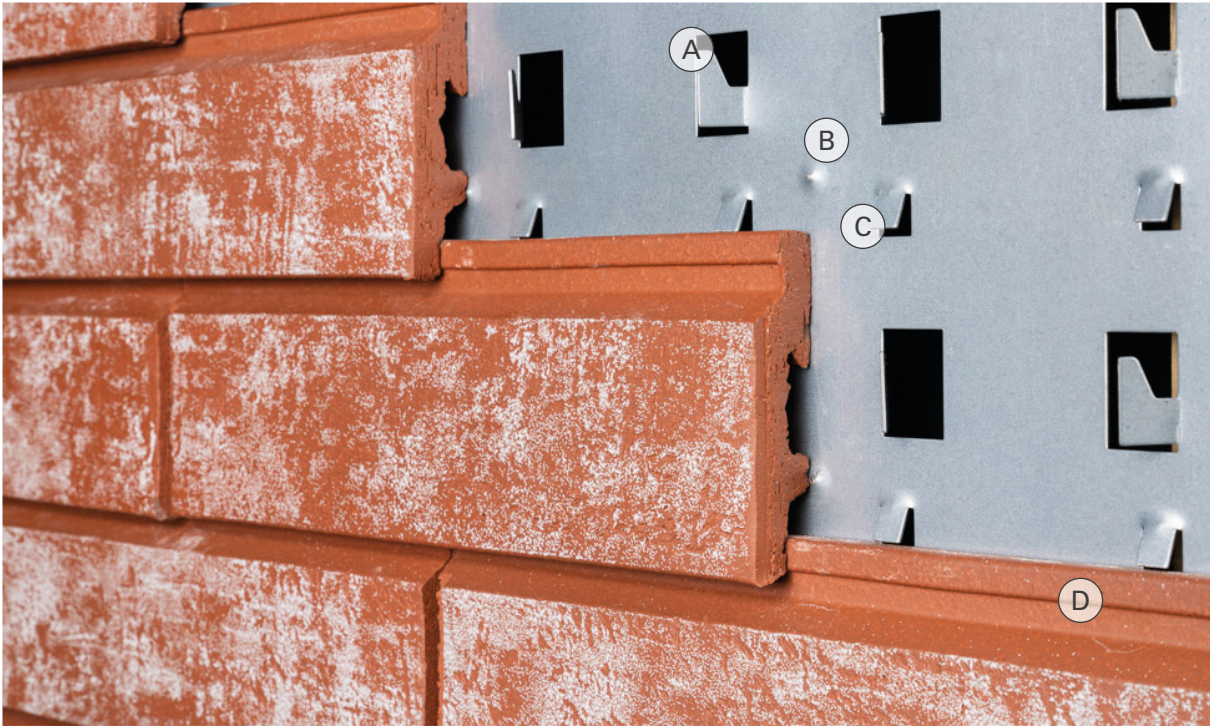
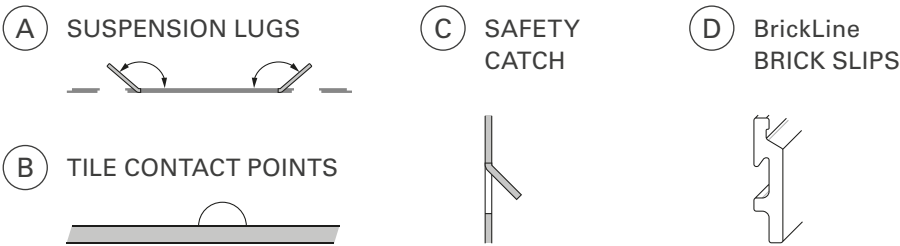
No joints requiring maintenance, no prying out of grouting. Offering resistance to vibrations at all times.
- 8

REUSABLE

Our facades can be fully dismantled and reused – an advantage in terms of value retention.

## BrickLine CASSETTE PANELS

BrickLine cassette panels are the strongmen in our facade systems. They hold the brick slips and keep them in place using zero force thanks to safety catches. They are fixed to the wall in such a way that a ventilation gap ensures sufficient air circulation. This means that the building wall is kept reliably dry and diffused moisture is transported from within to the outside. Optimal quality is required for this task: that is why BrickLine cassette panels are made of steel with a so-called ZM310 coating. This not only guarantees a lifespan of over 50 years but also increased corrosion protection in salty air or an industrial atmosphere. Whatever happens, the facade will hold.





**BRICKLINE IS  
ALWAYS IN SEASON:  
INSTALLATION IS  
POSSIBLE AT ANY TIME  
OF THE YEAR.**

22

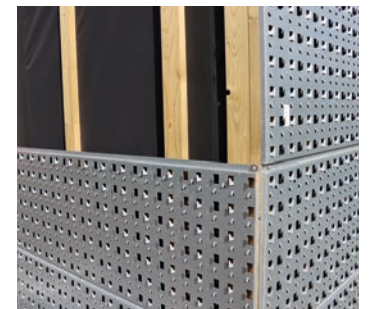
20

## SYSTEM CONFIGURATION &amp; INSTALLATION

## Easy installation using a connector system.

### ① SCREW ON

The coated ZM310 steel panels are screwed onto the substructure.



### ② POSITION

The second step involves positioning the first brick slips in accordance with the plans. Alignment can take place individually and is not subject to any restrictions.



### ③ SUSPEND

The installation hooks on the steel cassette panel enable the simple suspension of the bricks and, thanks to their precise construction, ensure that all distances are exact.



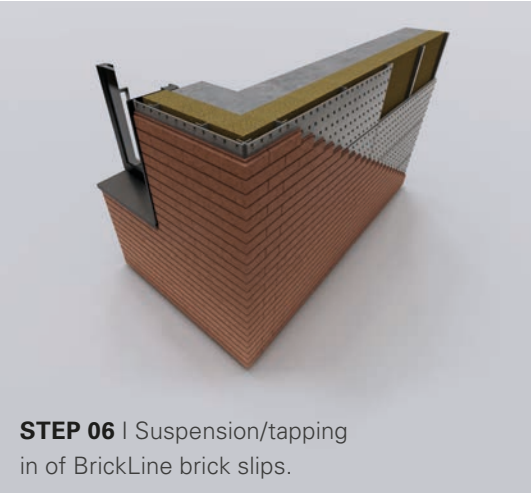
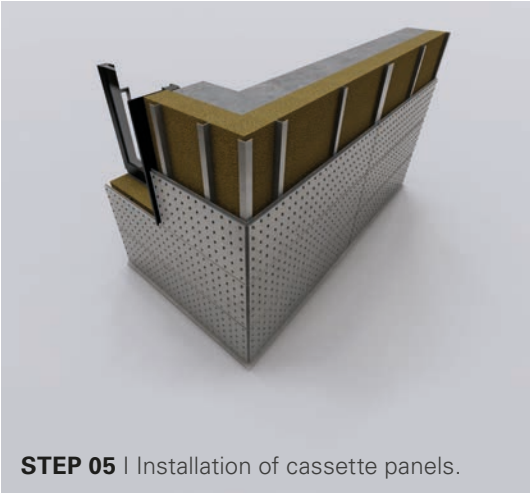
### ④ SECURE

With gentle taps of a hammer, the brick slips can be finally positioned and subsequently anchored in the catch mechanism using zero force.

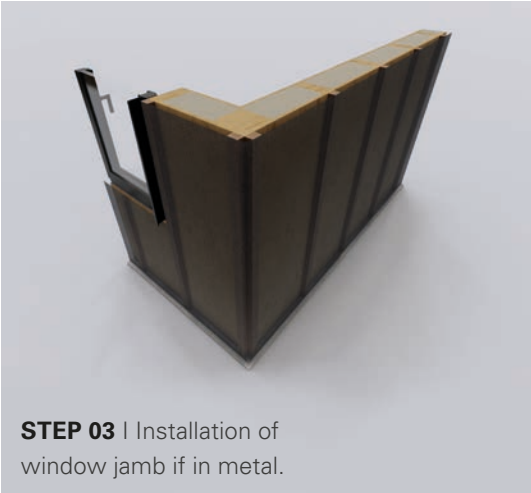




# In a solid structure

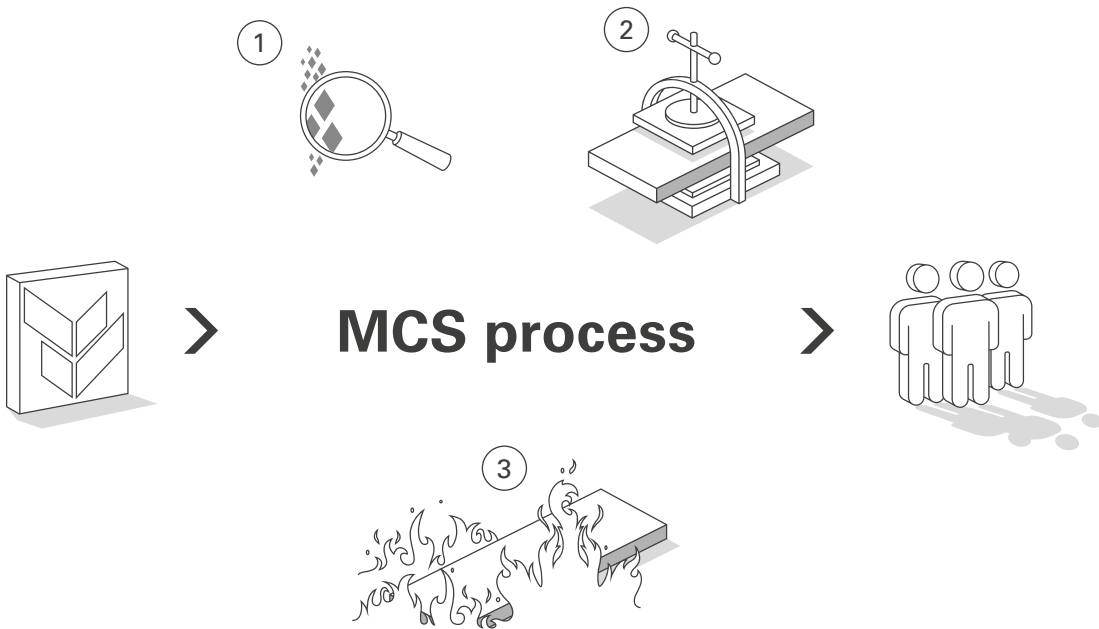


# In a wooden structure



# Creating unique product quality through our MCS process.

THE ULTIMATE PERFORMANCE FOR CERAMIC FACADES



## 1 MICRO-PROCESSING THE CLAY

Our work begins on a very fine level: the first step consists of grinding the clay to a grain size of 64 micrometres (0.064 millimetres). The fireclay used is also ground up until it is ultra-fine. Both raw materials are then placed in the press.

## 2 WORK AT HIGH PRESSURE

With the aid of our vacuum extrusion process, the desired ceramic element is pressed at high pressure. The fine processing of the clay and fireclay in combination with a high press pressure guarantees a high level of solidity.

## 3 SINTERING – NOW THINGS REALLY HEAT UP

Thanks to maximum temperatures of up to 1,200°C, the ceramic elements can be fired until sintering takes place. The material, which has already been heavily compressed, is compacted even further. All raw materials are fused together.

# Our colours.

BrickLine COLLECTION

Classic, modern, striking or preferably subtle? Thanks to the different shades and surfaces of our BrickLine brick slips, all facade design wishes can be turned into reality. We would be happy to provide you with samples so you can see the depth of colour and surface finish of our BrickLine products for yourself.

The brick slips are manufactured in the format 260×65×18 mm, requiring 59.2 tiles/m².



70501 | Oxide red



70505 | Chalk grey



70504 | Chalk red



70503 | Sand beige



70502 | Platinum black

Further colors on request: [info@tonality.de](mailto:info@tonality.de)



## SHOWROOM

# Room for innovation.

Anyone who wants to experience innovation in facade construction should visit the NEXT Studio in Frankfurt am Main. In our display area at the site, you can experience TONALITY live and see the benefits of our systems for yourself. It goes without saying that we will be happy to offer you personal advice.

Feel free to arrange an appointment and visit us at the NEXT Studio. We look forward to meeting you.



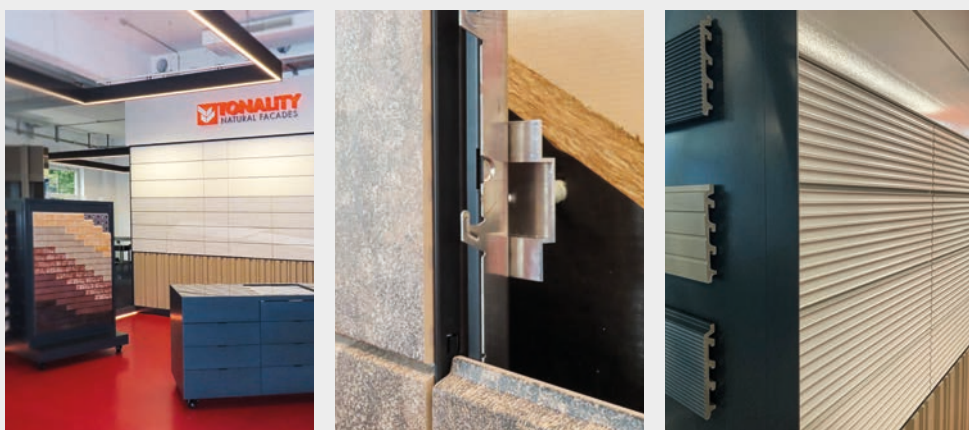
### ADDRESS:

Facade and Design Studio  
Ferdinand-Happ-Str. 28  
60314 Frankfurt am Main



### CONTACT:

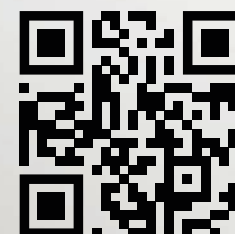
TONALITY® GmbH  
Tel. +49 6435 90999-0  
info@tonality.de



View of our display area at the NEXT Studio.

DISCOVER THE TONALITY® PRODUCT WORLD

# Also available to you online.



[www.tonality.de](http://www.tonality.de)

Discover our product range on our website.



Albania | Australia | Austria | Belgium | Bosnia and Herzegovina | Bulgaria | Canada | Croatia | Czech Republic | Denmark | Estonia  
Finland | France | Germany | Greece | Hungary | Iran | Ireland | Italy | Kazakhstan | Kosovo | Latvia | Lithuania | Luxembourg | Macedonia  
Montenegro | Netherlands | New Zealand | Norway | Poland | Russian Federation | Serbia | Slovakia | Slovenia | South Korea | Spain  
Sweden | Switzerland | Turkey | United Kingdom | USA | Vietnam



TONALITY® GmbH  
In der Mark 100  
D-56414 Weroth

Tel. +49 6435 90999-0  
info@tonality.de



[www.tonality.de](http://www.tonality.de)

