

CONSTRUCTION PROCESSES



ARCHITECT | Turner Architects, Australia
OBJECT | Sanctuary, Wentworth Point NSW, Australia
PHOTOGRAPHER | Tom Ferguson Photography, Australia

**BUILDING
INNOVATIONS**



**LEIPFINGER
BADER**



ARCHITECT | Lothar Huber Architects, Austria

OBJECT | Pertinsel Childcare Center, Fussach, Austria

PHOTOGRAPHER | Günter Laznia, Austria



STRONG ALONE. STRONGER TOGETHER.

LEIPFINGER-BADER PROVIDES INTEGRATED CURRENT AND FUTURE SOLUTIONS FOR SUSTAINABLE NEW CONSTRUCTION AND RENOVATION PROJECTS.

CLAY BLOCK SYSTEMS

- SILVACOR & CORISO
- Ring beam formwork
- Column formwork
- Slab edge element
- Integrated roller shutters and Venetian blinds

MODULAR CONSTRUCTION SYSTEMS

- Solutions for serial and modular construction

VENTILATION SYSTEMS

- Decentralized ventilation system for integration into roller shutter casings or Venetian blind boxes

FACADE SYSTEMS

- TONALITY®
- Renovation solutions for ETICS

FLOOR SLAB SYSTEMS

- TONALITY®
- Timber earth floor slab and reinforced brick concrete slab

FLOORING SYSTEMS

- Design screed replacement tile
- Screed replacement tile

CLAY CONSTRUCTION SYSTEMS

- Clay panels
- Clay plaster
- Clay paint

CRADLE TO CRADLE

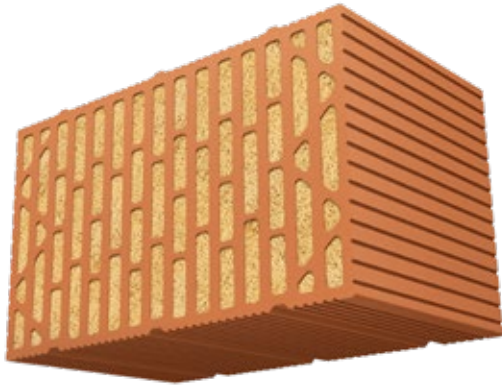
- Recycling
- Unfired brick
- Brick aggregates for green roofs

INNOVATIVE AND SUSTAINABLE SOLUTIONS FOR RESIDENTIAL CONSTRUCTION



ARCHITECT | Feigel – Dumps Architekten Part mbB, Germany
OBJECT | Multifamily Residential in Landshut, Germany
PHOTOGRAPHER | Lebensraum Ziegel/Christoph Große, Germany

| SILVACOR



Healthy and ecological living environments with integrated insulation made of pure natural wood fiber from STEICO for superior thermal insulation. The sustainable, natural and efficient wall building material is the perfect solution for the future of construction.

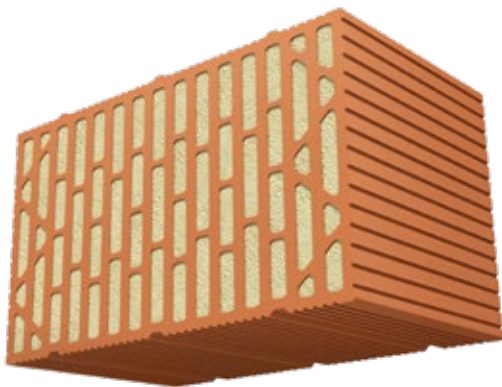
- No external thermal insulation composite system required
- Superior indoor climate in summer and winter
- Effective heat protection
- Exclusive use of natural raw materials
- Easily recyclable
- **NEW:** Now available as modular building component



| SILVACOR

Suited for
NEW CONSTRUCTION

| CORISO



Sets new standards in multi-storey and residential construction based on purely natural raw materials. The solution contains no chemical additives, solvents or pollutants, scoring top-notch values in building physics.

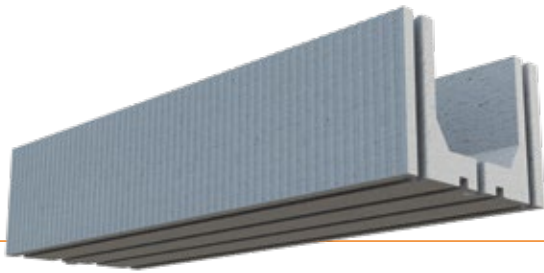
- Energy efficiency as a result of integrated thermal insulation
- Optimum sound insulation in multi-storey residential buildings
- Healthy living environments thanks to the use of natural materials
- Optimum statics
- Easily recyclable
- **NEW:** Now available as modular building component



| CORISO

Suited for
NEW CONSTRUCTION

| RING BEAM FORMWORK



- Less time required due to simple and fast processing
- Can be cut on-site and connected to column formwork
- No need for formwork or brackets for position securing
- Recyclable and ecological, certificate of compliance with disposal provisions

| COLUMN FORMWORK



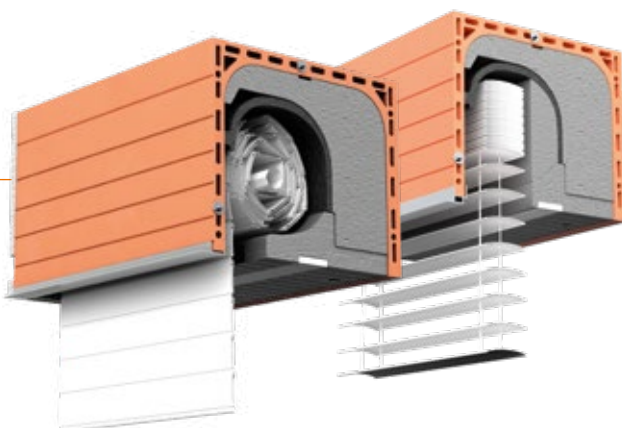
- Less time required due to simple and fast processing
- Can be filled with concrete to storey height, no lateral support required
- Can be connected to ring beam formwork
- Recyclable and ecological, certificate of compliance with disposal provisions

| SLAB EDGE ELEMENT



- System solution for thermally insulated slab ends
- Solid brick formwork
- Ideal plaster base
- No shuttering work
- High level of sound insulation

| INTEGRATED ROLLER SHUTTERS AND VENETIAN BLINDS



- High level of sound insulation
- High degree of thermal insulation
- Weather-resistant
- Excellent plaster adhesion
- Clearance certificate for disposal

INNOVATIVE AND SUSTAINABLE ADDITIONAL PRODUCTS



| RING BEAM FORMWORK

Suited for

NEW CONSTRUCTION



| COLUMN FORMWORK

Suited for

NEW CONSTRUCTION



| SLAB EDGE ELEMENT

Suited for

NEW CONSTRUCTION



| INTEGRATED ROLLER SHUTTERS AND VENETIAN BLINDS

Suited for

NEW CONSTRUCTION



ARCHITECT | Feigel – Dumps Architekten Part mbB, Germany

OBJECT | Multifamily Residential in Landshut, Germany

PHOTOGRAPHER | Lebensraum Ziegel/Christoph Große, Germany

ECOLOGICAL WALL BUILDING MATERIAL FOR HEALTHY LIVING

| CLAY PANELS



lehmore® clay panels are drywall panels used in interior construction. In their version as clay climate components with integrated pipe systems they even heat and cool walls and ceilings. They are suited for interior walls and facing formwork for new construction projects, for the renovation of buildings as well as for conservation and listed buildings.

- Healthy and sustainable living
- Absorption of water vapor
- The regulating effect of indoor air humidity creates a superior indoor climate
- Low energy demand in production
- Sound insulation of 52 to 56 dB
- Incombustible and 100 % recyclable raw material

| CLAY PANELS



Suited for
NEW CONSTRUCTION //
RENOVATION



PHOTOGRAPHER | Magdalena Türtscher,
buero-magma.at for Lutum, Austria

CLAY PAINT

Clay interior wall and ceiling paint is highly breathable for optimum interior moisture regulation. It absorbs moisture and heat and slowly releases it again. The result is a natural humidity and a comfortable room temperature. The colors provide a warm and natural smooth feeling.

- Sustainable and healthy living solution
- Beneficial indoor climate
- Aesthetic appeal
- 100 % recyclable



CLAY PLASTER

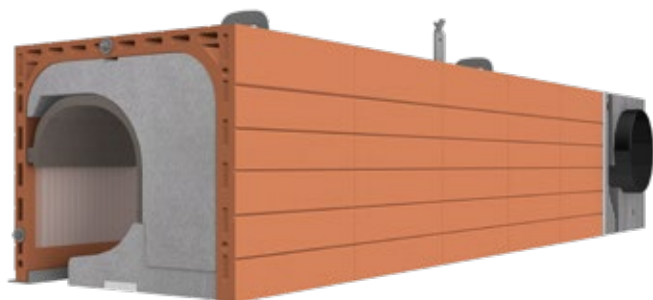
Clay plaster is available in a variety of textures and colors, making it the perfect material for modern and aesthetic housebuilding on all standard building substrates.

- Highly breathable for optimum interior moisture regulation
- Ecological and natural product, VOC-free
- Aesthetic appeal and unique haptic experience
- 100 % recyclable



SILENT AND HEALTHY HOUSING VENTILATION

| VENTILATION SYSTEM



Decentralized ventilation systems integrated into roller shutter casings or Venetian blind boxes create a healthy and well-tempered indoor climate.

- Elegant design on the inside, invisible on the outside
- Heat recovery of up to 93 %
- Airflow of up to 60 m³ per hour
- Very good exterior noise insulation of 59 dB
- Extremely smooth-running operation
- Very low power consumption
- Air humidity adjustable from 40 to 75 %
- Landlord protection: readout of operating hours
- In sleep mode, the device reduces its airflow to a non-audible state



| VENTILATION SYSTEM

Suited for
NEW CONSTRUCTION // RENOVATION

| VENTILATION ACCESSORIES



Wall panel or handheld transmitter



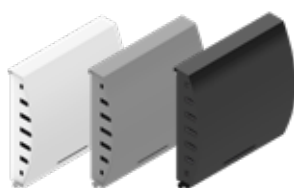
Replacement filter



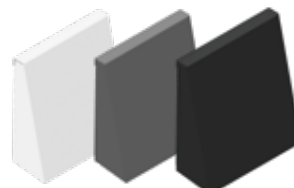
Pollen filter



Assembly block (exhaust air set)*



Exterior wall cover – white, grey, anthracite*



Exterior wall cover – white, grey, anthracite (exhaust air set)*

*For integrating the ventilation system into the wall without a roller shutter or venetian blind box.

INNOVATIVE OFFICE BUILDING **ZERO EMISSION BUILDING**

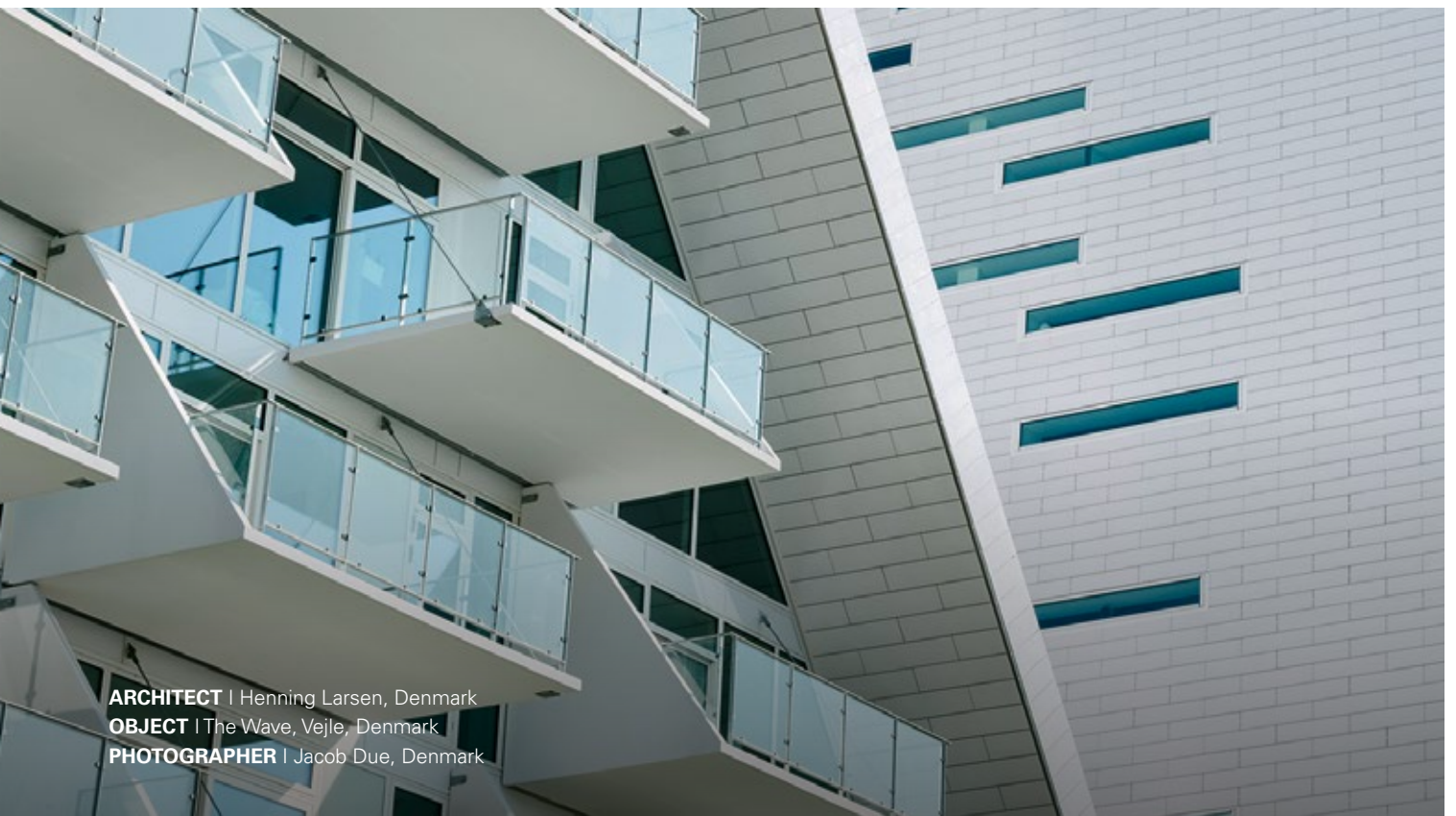


ARCHITECT | Schwarz Architekturbüro, Architect M.A. (TUM) Bernd-Simon Schwarz, Germany

OBJECT | Innovative Office Building in Munich-Gräfelfing, Germany

PHOTOGRAPHER | Heiko Stahl, Germany

REAR-VENTILATED CERAMIC FACADES



ARCHITECT | Henning Larsen, Denmark
OBJECT | The Wave, Vejle, Denmark
PHOTOGRAPHER | Jacob Due, Denmark

| TONALITY®

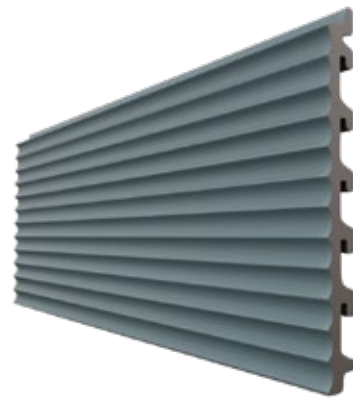
Naturally versatile – is the core design principle of TONALITY® ceramic facades. With a wide range of colors, surfaces and forms there is no limit to the design of facades.

- Rear-ventilated facade
- Infinite designs for maximum individuality
- Efficient, ecological and durable
- High-performance surface for any requirement
- 100 % removable and reusable



| TONALITY®

Suited for
NEW CONSTRUCTION //
RENOVATION



STANDARD COLLECTION



Plain, brick red nature



Unevenly grooved, VI2



Combed, BL4



Single pilaster stripe,
brick red, flamed



Multiple stripes, VI3



Ondo, BL2



Grooved, pearl grey



Multiple pilaster stripes, VI1



Multi-Wave, TU3

DESIGN COLLECTION



Plain, Cement 4



Plain, Oak 1



Plain, Travertin 1



Plain, Cement 1



Plain, Oak 3



Plain, Travertin 2

Discover more color options:

www.tonality.de/en/

| RENOVATION SOLUTIONS

Integrated solutions for the renovation of existing buildings. In collaboration with our strong partners, we provide solutions for renovating buildings with external thermal insulation composite systems.

- Renovation of ETICS without disposal costs
- Sustainable condensation and rain protection
- Design flexibility and material diversity
- Durable and maintenance-free facade solution

ARCHITECT | Jacar Montajes SL, Spain

OBJECT | Leitzta, Navarra, Spain

PHOTOGRAPHER | Jorge Tellechea, Spain



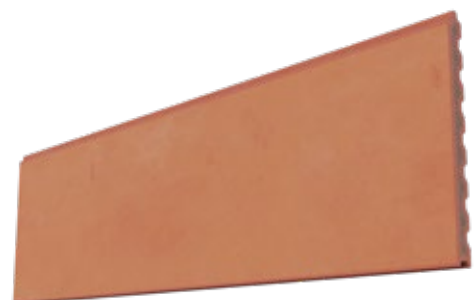
NATURAL AND EFFICIENT **SCREED REPLACEMENT TILE**



DESIGN SCREED
REPLACEMENT TILE



SCREED
REPLACEMENT TILE



Our design screed tile delivers a unique aesthetic with infinite colours and styles available. Its versatile nature adjusts to a wide variety of living styles such as in a modern townhouse, an urban loft or in classic country home.

- Highly aesthetic and elegant flooring as an alternative to tiles and natural stone
- Dry screed and flooring rolled into one
- Decreases the use of resources and drastically reduces the time required in the construction progress
- High degree of thermal conductivity, which saves heating time and energy costs
- Individual design options
- 100 % removable



| DESIGN SCREED TILE

Suited for

NEW CONSTRUCTION //
RENOVATION

In many buildings, the installation of wet screed results in moisture problems and customer complaints – thanks to the screed replacement tile these issues are a thing of the past. No more long waiting for four to six weeks. Walkable after 24 hours – loadable after 48 hours, without cracks or expansion joints.

- Reduces the time required in the construction progress
- Avoids structural damage
- Low installation height
- Reduces heating energy



| SCREED REPLACEMENT TILE

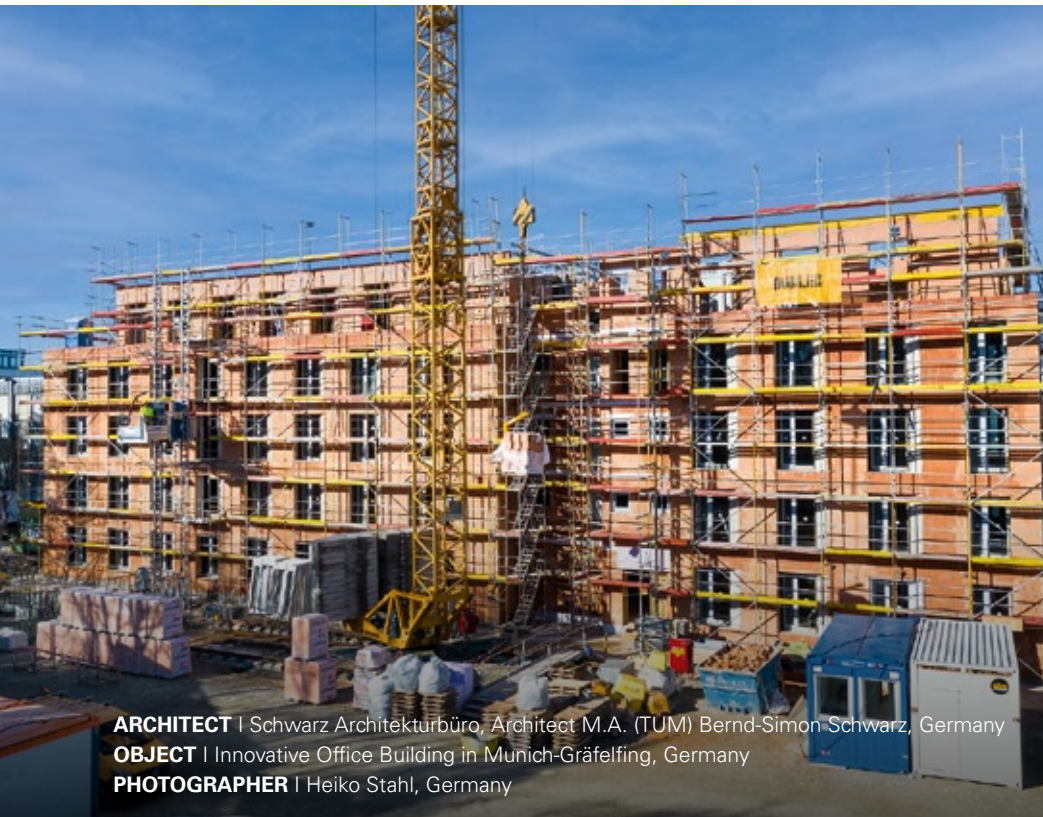
Suited for

NEW CONSTRUCTION //
RENOVATION

SUSTAINABLE SOLUTIONS FOR THE BUILDING OF THE FUTURE

The Climate Protection Plan 2050 comprises the climate protection principles and goals of Germany's federal government and serves as a roadmap for achieving greenhouse gas neutrality in Germany by 2050.

As a pioneer in the construction industry, we endorse these endeavors and are implementing measurements in our company to achieve the provisions and goals as early as in 2030.



ARCHITECT | Schwarz Architekturbüro, Architect M.A. (TUM) Bernd-Simon Schwarz, Germany
OBJECT | Innovative Office Building in Munich-Gräfelfing, Germany
PHOTOGRAPHER | Heiko Stahl, Germany

ZERO EMISSION BUILDING

Sustainable building model:
The zero-emission office
building

The first building of its kind in Germany, these offices create a comfortable climate without heating and air conditioning all year round. The five-storey office building features double-shell Unipor brick masonry resulting in pleasant indoor temperatures of 22 to 26 degrees Celsius – without any costly and energy-intensive housing technology.



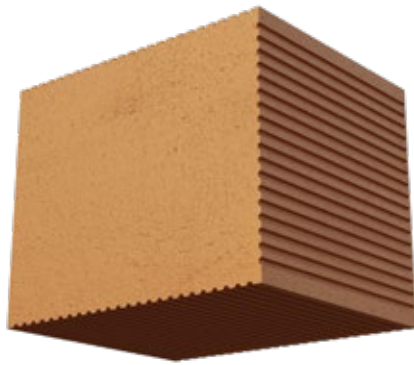
ARCHITECT | dd Planquadrat Architekten, Germany
OBJECT | Sparkasse Duisburg, Germany
PHOTOGRAPHER | Sven Tornow, Germany

FACADE AND ROOF

All in one design and protected against graffiti is the Sparkassen Kompetenz Zentrum Duisburg.

TONALITY® ceramic facades meet current and future requirements. Thanks to their single-shell design they are extremely lightweight and provide excellent protection against all kinds of environmental influences. The individual components are scratch-resistant, impact-proof and permanently protected against graffiti and vandalism.

| UNFIRED BRICK



Consisting of recycled waste-based brick and mineral binding agents, our unfired bricks are pressed in a special procedure, and subsequently cured without energy. This innovation is the prototype of unfired wall building material.

- Decreases the use of resources
- High bulk density and compressive strength
- Optimum sound insulation



| UNFIRED BRICK – cold pressed brick from recycled building material

Suited for

NEW CONSTRUCTION //
RENOVATION

| RECYCLING

Our pioneering role in the sustainable reprocessing of building materials is based on innovative processes and techniques. The objective is the recycling of our products or developing new building materials from them.

- Driving the recycling economy
- Decreasing the use of natural resources
- Lowering air-polluting, noise and climate-damaging emissions
- Reducing the need for backfilling and landfill capacities
- Used in so-called R-concrete

Due to the exclusive use of natural raw materials in the production process, bricks can be easily reused after the recycling process, whether filled with insulating material or unfilled. Homogenous brick rubble can be used in a variety of ways:

- As raw material substitute and addition in brick production
- As top layer without binding agent in the form of technical aggregate
- As substrate in vegetation construction or for green roofs
- As a new generation of bricks filled with insulating material



| RECYCLING

Suited for

NEW CONSTRUCTION //
RENOVATION

| RE-USE: FACADE

Our facade elements including the supporting structure can be used in other projects according to the re-use principle.

- Permanent graffiti protection
- Low deadweight due to single-shell design
- Fast and easy assembly
- Unlimited replacement options
- Invisible and theft-proof fastening



| RE-USE

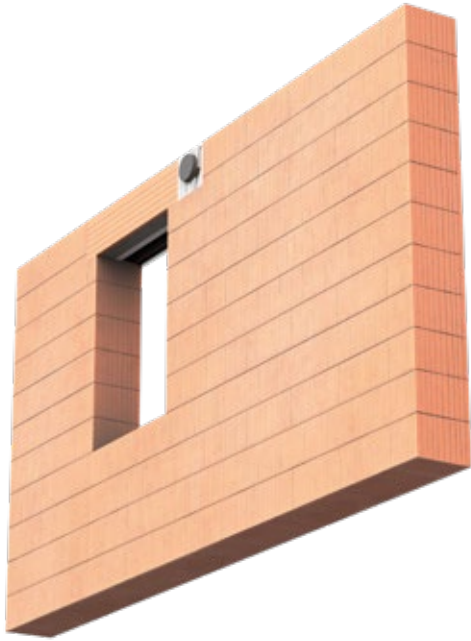
Suited for

NEW CONSTRUCTION //
RENOVATION



PREFABRICATED WALL COMPONENTS FOR EFFICIENT HOUSING CONSTRUCTION

PREFABRICATED COMPONENTS FOR SERIAL AND MODULAR CONSTRUCTION



The benefits of a modern brick house, the speed of prefabricated construction, the high quality of system components and the sustainability of LEIPFINGER-BADER products all combined into one – that is what we call efficient construction. Our prefabricated components, i.e., brick wall elements are supplied on demand with integrated roller shutter casings ready for installation. In combination with our system products these components reduce time and costs and are the perfect end-to-end solution for your construction project.

- Total planning flexibility
- Enhanced security for employees on the construction site
- Economic efficiency (time reduction, fewer workers, faster workflows)
- High level of executional certainty due to preassembly
- Exact calculation of quantities and material
- High degree of vertical integration thanks to
- LEIPFINGER-BADER system products
- High level of assembly accuracy
- Zero waste on the construction site, providing for a dust-free construction site
- Reduced construction time
- High price calculation reliability



| MODULAR BUILDING SOLUTIONS

Suited for
NEW CONSTRUCTION



ARCHITECT | Diezinger Architekten GmbH, Eichstätt, Germany

OBJECT | Townhall Dorfen, Germany

PHOTOGRAPHER | Stefan Müller-Naumann, Munich, Germany



ARCHITECT | DI Lothar Huber Architects, Austria
OBJECT | Pertinsel Childcare Center, Fussach, Austria
PHOTOGRAPHER | Günter Laznia, Austria



ARCHITECT | COBE, Denmark
OBJECT | Forfatterhuset Kindergarden, Copenhagen, Denmark
PHOTOGRAPHER | Adam Mørk, Denmark

DRIVERS OF ENERGY-EFFICIENT ECOLOGICAL CONSTRUCTION PROJECTS



Owner Thomas Bader has been managing the family run business LEIPFINGER-BADER Group since 2006. The brick factory has developed to become one of the most **innovative** and **future driven system provider** in the building industry.



The construction industry is facing the greatest disruption in its history. As one of the leading manufacturers of building materials and system components for climate-neutral construction. We consider ourselves as innovation drivers with a clear focus on ecologically sustainable products and a reliable partner to our customers.

In a time of change and disruption, we are even more committed to our mission: strength and growth through responsibility. By building on a corporate culture of trusting cooperation and appreciation, our

employees and partners will continue to be the focus of our actions in the future.

Growing our business holistically means creating long-term values, using our resources responsibly and further expand our role as a leader in sustainability, innovation and digitalization. With innovative solutions, a consistent focus on research and development as well as sustainable services we will guide the construction industry into a successful future and actively shape the process of change as a pioneer. Because nothing is more constant than change.

LEIPFINGER-BADER – your efficient and innovative provider of building materials and system products.

CONSULTING EXPERTS

SALES EUROPE



| WOLFGANG HÄUSSLER

COO / Sales Europa

Mobile: +49 151-280 558 55

Mail: wolfgang.haeussler@tonality.de

SALES WORLDWIDE



| PATRICK BEUL

Sales worldwide

Mobile: +49 170-306 08 77

Mail: patrick.beul@tonality.de



| MATTHIAS KLEIBEL

Sales worldwide

Mobile: +49 160-125 62 28

Mail: matthias.kleibel@tonality.de

Factory Vatersdorf

Ziegeleistraße 15
84172 Vatersdorf
Tel. +498762-733-0
Fax +498762-733-110

Factory Puttenhamen

Äußere Freisinger Straße 31
84048 Puttenhamen
Tel. +498751-84686-0
Fax +498751-84686-26

Factory Schönlind

Ziegeleistraße 1
92249 Schönlind
Tel. +499662-70087-0
Fax +499662-70087-20

Factory Pfeffenhausen

Rottenburger Str. 73
84076 Pfeffenhausen
Tel. +498782-25897-0
Fax +498782-25897-90

Factory Weroth

TONALITY GmbH
In der Mark 100
56414 Weroth
Tel: +496435-90999-0

GET IN TOUCH
WITH US



www.leipfinger-bader.de/contact-us/

Memberships:

